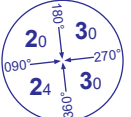


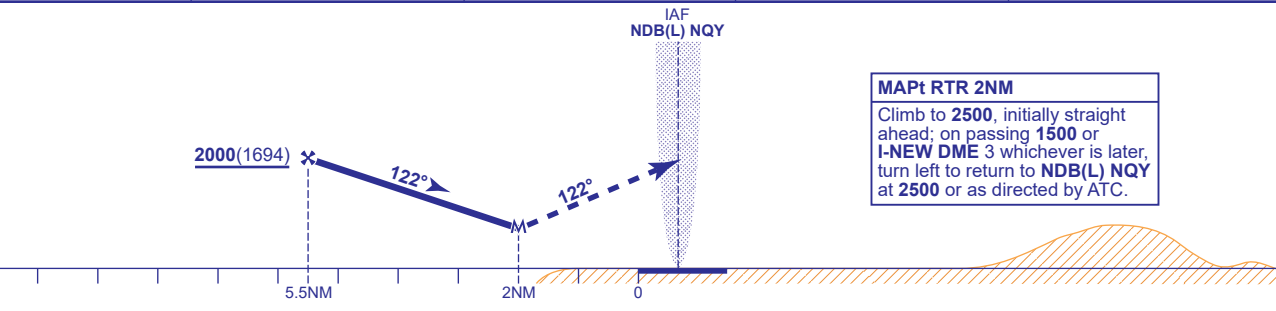
INSTRUMENT APPROACH CHART - ICAO

NEWQUAY
SRA RTR 2NM
RWY 12
(ACFT CAT A,B,C,D)

 MSA 25NM NDB(L) NQY	APP 133.405	NEWQUAY APPROACH	AD ELEVATION 390	TRANSITION ALTITUDE 3000
	TWR 134.380	NEWQUAY TOWER	THR ELEVATION 306	
	RAD 127.930	NEWQUAY RADAR	OBSTACLE ELEVATION 1286 AMSL (980) (ABOVE THR)	
	ATIS 127.405	NEWQUAY INFORMATION		
			BEARINGS ARE MAGNETIC	



RECOMMENDED PROFILE Gradient 5%, 305FT/NM				
NM (Radar Ranges)	5	4	3	2
ALT(HGT)	1880(1574)	1580(1274)	1270(964)	970(664)



Aircraft Category		A	B	C	D	Rate of descent	G/S KT	160	140	120	100	80
OCA (OCH)	Procedure	960(654)	960(654)	960(654)	960(654)		FT/MIN	810	710	610	510	410
VM(C)OCA (OCH AAL)	Total Area	960(570)	1200(810)	1330(940)	1330(940)							

NOTE 1 ATC will normally require aircraft to hold no lower than 3500.
2 Radar Ranges are to the threshold of RWY 12.

CHANGE (6/24): VM(C)OCA(OCH AAL) CAT A INCREASE.